

# PIONEER WEEKLY BULLETIN

Week of August 25, 2025



## A note from the Office Team:

### MESSAGE FROM THE PEPTC

Use the QR Code to access the PTC Social Media Pages, and to sign up for Volunteering.



### ATTENDANCE MESSAGE:

**Absences:** Please report absences daily by calling the attendance hotline at 584-8831; press 2 to leave a message to let us know the reason for the absence. You can also email the office and send a doctor's note to [pesattendance@puesd.net](mailto:pesattendance@puesd.net). If a notification is not received from the parent within three days of an absence, the absence will be considered unexcused (AR 5113). Absences exceeding 3 consecutive days requires a doctor's note or the absences will be unexcused. After 6 days in total, a doctor's note will be required every time a child is absent or it will be unexcused.

**NOTE: IF YOU ARE EXPERIENCING HOMELESSNESS AND NEED ACCESS TO LOCAL RESOURCES, PLEASE CONTACT THE SCHOOL AT 559-584-8831, EXT. 1401 OR 1402**



## Looking Ahead:

MONDAY

TUESDAY

WEDNESDAY

THURSDAY

FRIDAY

- Student Council Applications Due (4<sup>th</sup> & 5<sup>th</sup> grades)

- Minimum Day (1 hour early out)

**PANTHER PRIDE DAY!! WEAR YOUR PANTHER SPIRIT GEAR EVERY FRIDAY!**



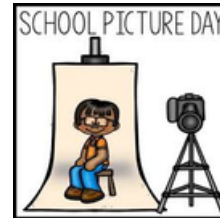
## Upcoming events:

### SCHOOL BOARD MEETING

PUESD School Board Meeting  
Wednesday, August 27th  
6pm @ District Board Room

### FALL SCHOOL PICTURES

Friday  
August 29th



### Early Out Wednesdays

#### RELEASE TIMES

TK/Kinder @ 1:00 pm  
1st & 2nd @ 1:05pm  
3rd-5th @ 1:45pm



## Stay in Touch :



[pesattendance@puesd.net](mailto:pesattendance@puesd.net)



(559) 584-8831,  
Ext. 1401 or 1402  
Transportation, Ext. 1134



OFFICE HOURS: 7:45am-4:00pm

## School Information:

Link to Lunch Menu:

[Lunch Menu Link](#)

Link to Parent/Student Handbook:

[25-26 PES Student-Parent Handbook Final.pdf](#)

LINK TO SCHOOL HOME PAGE:

[PES HOME PAGE](#)

# School Picture Day



## Friday, Aug. 29

Click link then enter school code

[www.islandphotography.net](http://www.islandphotography.net)

School CODE

# 656



Order  
**ONLINE**  
or  
**HAND IN**  
your  
Order  
on  
**PICTURE**  
Day  
😊

### Order forms will be sent home soon.

Picture order forms are handed out 1-2 weeks before picture day or download an order form from our website and hand it to the photographer on picture day. Orders delivered to the School 2-3 weeks after Picture Day.



559.456.1400  
info @islandphotography.net



Winner of the BBB Torch Award for  
"Ethical Small Business of the Year"

2-Time Winner of the Fresno Compact Award  
"Honoring Business/School Partnerships"



**PIONEER**

OFFICIAL SPIRIT WEAR STORE

**BACK-TO-SCHOOL**

**SALE**

**SAVE  
25%**

**SHOP NOW**

USE CODE:  
**SCHOOL25**



**SHOP AT: 1STPLACE.SALE/14625**

**Get The BEST DEALS  
From Your Official Store**

- T-shirts
- Hoodies
- Polos
- Headwear
- Backpacks
- Drinkware
- And More...

**FREE**  
**SHIPPING**  
**ORDERS OVER**  
**\$100**



**SCAN HERE  
TO ORDER**



# Meet the Counselor Mrs. Uribe



## What does a School Counselor do?

- Support student academic, social, and emotional growth.
- Provide individual and small group counseling.
- Teach classroom SEL lessons.
- Collaborate with teachers and families.
- Help with goal setting, conflict resolution, self-regulation skills, and other social skills.
- And so much more!

## Contact Information:



559-584-8831 ext: 1619



uribep@puesd.net

[Click here to visit Mrs. Uribe's  
Counseling Page](#)

Hi families! Welcome to the 2025-2026 school year. I'm Mrs. Uribe, the school counselor here at Pioneer Elementary. This is my 5<sup>th</sup> year as a counselor and 4<sup>th</sup> year as a Pioneer Panther. I feel so lucky to do a job I truly love. My passion is helping students build confidence, learn new skills, and discover the power of kindness. I lead lessons, small groups, and school-wide activities that encourage empathy and courage. You'll see me around teaching SEL lessons, kindness projects, and small groups that teach skills for school and life. I can't wait to get to know you, our PES families, and grow together!

## Education:

University of Southern California (USC)  
M.Ed School Counselor + PPS Credential  
CSU Bakersfield  
B.A Child Adolescent and Family Studies  
B.A Religious Studies

## Fun Facts:

- I have three dogs- they are wild!
- I don't know how to ride a bike.
- My first language is Spanish.
- Ceviche and Pizza are my favorite foods!

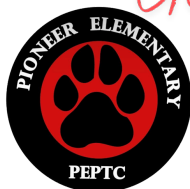


# PIONEER ELEMENTARY

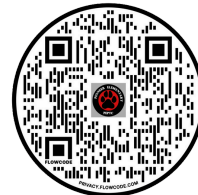
## PARENT TEACHER CLUB

Co- Presidents  
**Amanda Ruch**  
**Courtney Smith**

Co- Vice Presidents  
**Candace Nelson**  
**Melissa Cole**



Scan the Code to  
Get Connected



Co- Secretaries  
**Christy Balderama**  
**Brenda Yanez**

Treasurer  
**Nicole Kopitzke**  
**Amanda Augustus**

## 2025-2026 PIONEER EVENTS AND IMPORTANT DATES

\*ALL DATES AND EVENTS ARE SUBJECT TO CHANGE

### AUGUST

Back to School Night 8-12  
First Day of School 8-13  
Coffee with the Crew 8-13

### September

Labor Day (no school) 9-1  
PTC Meeting at 6pm 9-2  
PD Day No School 9-19  
Panther Store 9-26

### October

PTC Meeting at 6pm 10-14  
Panther Store 10-24  
Kinder Pumpkin Patch 10-27  
Halloween Classroom Parties 10-31

### November

PTC Meeting at 6pm 11-4  
Fall Festival 11-8  
Panther Store 11-14  
Thanksgiving's Break 11-24-11-30

### December

Holiday Shop 12-2-12-4  
Winter Break 12-22-1-11

### January

Winter Break 12-22-1-11  
PTC Meeting 1-13  
MLK Day (no school) 1-19  
Panther Store 1-30

### February

Lincoln's Birthday (no school) 2-9  
PTC Meeting at 6pm 2-10  
Valentine's Day Parties 2-13  
President's Day 2-16  
Family Paint Night 2-18  
Panther Store 2-27

### March

PTC Meeting at 6pm 3-3  
ShamWalk Jog a thon 3-17  
PD Day (no school) 3-13  
Panther Store 3-22  
Spring Break 3-30-4-6

### April

Spring Break 3-30 -4-6  
PTC Meeting at 6pm 4-7  
Book Fair 4-13-4-15  
Open House 4-15  
Panther Store 4-17

### May

Staff Appreciation 5-8  
Panther Store 5-15  
Memorial Day (no school) 5-25

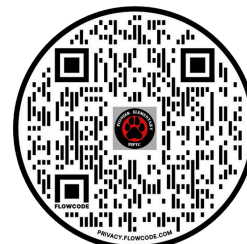
### June

Field Day 6-1  
5th Grade Celebration 6-3  
Talent Show 6-4  
Last Day of School 6-5



DON'T FORGET

Scan Our code  
to stay up to date  
[peptc@yahoo.com](mailto:peptc@yahoo.com)







PIONEER UNION ELEMENTARY SCHOOL DISTRICT  
1888 N Mustang Drive – Hanford Ca 93230  
(559)585-2400 Fax (559) 584-5048  
[www.puesd.net](http://www.puesd.net)

**California Assessment of Student Performance and Progress  
Summative Assessments  
Student Score Report Parent and Guardian**

Dear Parent/Guardian:

This spring, students in grades 3 through 5 took the Smarter Balanced Summative Assessments for English language arts and math. Students in grades 5 and 8 also took the California Science Test.

These tests can be combined with other measures like report card grades, classroom work, and teacher observations to give families and teachers a more complete picture of each child's learning. You can use these results to identify where your child is doing well and where they might need more support. It is important to know that summative test results are not used to determine if a student moves to the next grade level.

*Your child's score report will be available through your portal in [Campus Parent](#).  
(Please check the portal for instructions on how to access results.)*

**To learn more about your child's scores**, go to the Starting Smarter website at <https://www.ca.startingsmarter.org/>. There, you will find information about test results, sample test questions, free resources to support your child's learning, and a guide to prepare for parent-teacher conferences.

If you have questions or concerns about your child's progress, please call the school office to arrange a conference with your child's teacher. If you do not yet have a portal set up, please email Josh Vogelgesang at [vogelgesangj@puesd.net](mailto:vogelgesangj@puesd.net) for instructions on how to get connected.

Sincerely,

John Raven, Superintendent  
Jennifer Anderson, Principal – Pioneer Middle School  
Sharon Cronk, Principal – Pioneer Elementary School  
Tenci Brown, Principal – Frontier Elementary School

California Department of Education • May 2024

“A Learning Community Dedicated to Excellence”





PIONEER UNION ELEMENTARY SCHOOL DISTRICT  
1888 N Mustang Drive – Hanford Ca 93230  
(559)585-2400 Fax (559) 584-5048  
[www.puesd.net](http://www.puesd.net)

## **Summative English Language Proficiency Assessments for California Student Score Report Parent and Guardian Letter**

Dear Parent/Guardian:

This spring, your child took the Summative English Language Proficiency Assessments for California (ELPAC) to measure how well they are learning the English language. The test results are not used to determine whether your child moves to the next grade level, but to monitor their progress and determine when they have mastered the English language.

*You can access your child's score report through the Infinite Campus parent portal, [Campus Parent](#).*

Students who speak multiple languages have many strengths, but they may also need extra support in the classroom while learning in English. Your child's score report consists of Oral Language (Speaking and Listening) and Written Language (Reading and Writing) skills. You can use this information to identify where your child is doing well and where they may need more support.

**To learn more about your child's scores**, go to the ELPAC Starting Smarter website at <https://elpac.startingsmarter.org/>. There, you will find information about test results, sample test questions, free resources to support your child's learning, and a guide to prepare for parent-teacher conferences.

If you have questions or concerns about your child's progress, please call the school office to arrange a conference with your child's teacher. If you do not yet have a portal set up, please email Josh Vogelgesang at [vogelgesangj@puesd.net](mailto:vogelgesangj@puesd.net) for instructions on how to get connected.

Sincerely,

John Raven, Superintendent  
Jennifer Anderson, Principal – Pioneer Middle School  
Sharon Cronk, Principal – Pioneer Elementary School  
Tenci Brown, Principal – Frontier Elementary School

California Department of Education • May 2024

“A Learning Community Dedicated to Excellence”





PIONEER UNION ELEMENTARY SCHOOL DISTRICT  
1888 N Mustang Drive – Hanford Ca 93230  
(559)585-2400 Fax (559) 584-5048  
[www.puesd.net](http://www.puesd.net)

**California Assessment of Student Performance and Progress  
Summative Assessments  
Student Score Report Parent and Guardian**

Estimado padre o tutor:

Este año, durante la primavera, estudiantes de 3º a 8º grado realizó las Evaluaciones sumativas de Smarter Balanced para Lengua y Literatura Inglesa, y Matemáticas. Los estudiantes de 5.º y 8.º grado también realizaron la Evaluación para ciencias de California.

Estos exámenes se pueden combinar con otras medidas como el reporte de calificaciones, el trabajo en el aula y las observaciones de los maestros, para ofrecer a las familias y a los maestros un panorama más completo del progreso del niño/a en su aprendizaje. Puede utilizar los resultados para identificar los aspectos en los que el niño/a va bien y en los que podría necesitar más apoyo. Es importante saber que los resultados de los exámenes sumativos no se usan para determinar si el estudiante pasa al siguiente grado escolar.

*Puede consultar el informe de puntaje del niño/a a través del portal para padres, [Campus Parent](#).*

**Para obtener más información sobre los puntajes del niño/a**, visite el sitio web de Starting Smarter, disponible en <https://www.ca.startingsmarter.org/>. Allí encontrará información sobre los resultados de los exámenes, exámenes de práctica, recursos gratuitos para apoyo del niño/a y una guía para preparar las reuniones de padres y maestros.

Si tiene preguntas o inquietudes acerca del progreso de su hijo, comuníquese con la oficina de la escuela para concertar una reunión con el maestro. Si aún no ha configurado un portal, envíe un correo electrónico a Josh Vogelgesang a [vogelgesangj@puesd.net](mailto:vogelgesangj@puesd.net) para obtener instrucciones sobre cómo conectarse.

Atentamente,

John Raven, Superintendente  
Jennifer Anderson, Principal – Pioneer Middle School  
Sharon Cronk, Principal – Pioneer Elementary School  
Tenci Brown, Principal – Frontier Elementary School

Departamento de Educación de California • Mayo de 2024

“A Learning Community Dedicated to Excellence”





PIONEER UNION ELEMENTARY SCHOOL DISTRICT  
1888 N Mustang Drive – Hanford Ca 93230  
(559)585-2400 Fax (559) 584-5048  
[www.puesd.net](http://www.puesd.net)

## **Summative English Language Proficiency Assessments for California Student Score Report Parent and Guardian Letter**

Estimado padre o tutor:

Este año pasado, durante la primavera, el niño/a a su cargo realizó las Pruebas sumativas del dominio de inglés para California (ELPAC, por sus siglas en inglés) que mide el progreso en el aprendizaje de inglés. Los resultados del examen no se utilizan para determinar si el niño/a pasa al siguiente grado escolar, sino para dar seguimiento a su progreso y determinar cuándo ha dominado el idioma inglés.

*Puede consultar el informe de puntaje del niño/a a través del portal para padres, [Campus Parent](#).*

Los estudiantes que hablan varios idiomas tienen muchas fortalezas, pero es posible que también necesiten apoyo adicional en el aula cuando aprenden en inglés. El informe de puntaje del niño/a consta de habilidades de lenguaje oral (expresión oral y comprensión auditiva) y lenguaje escrito (lectura y escritura). Puede utilizar dicha información para identificar los aspectos en los que el niño/a va bien y en los que podría necesitar más apoyo.

**Para obtener más información sobre los puntajes del niño/a**, visite el sitio web de ELPAC Starting Smarter, disponible en <https://elpac.startingsmarter.org/>. Allí encontrará información sobre los resultados de los exámenes, exámenes de práctica, recursos gratuitos para apoyo del niño/a y una guía para preparar las reuniones de padres y maestros.

Si tiene preguntas o inquietudes acerca del progreso del niño/a, comuníquese con la oficina de la escuela para concertar una reunión con el maestro. Si aún no ha configurado un portal, envíe un correo electrónico a Josh Vogelgesang a [vogelgesangj@puesd.net](mailto:vogelgesangj@puesd.net) para obtener instrucciones sobre cómo conectarse.

Atentamente,

John Raven, Superintendente  
Jennifer Anderson, Principal – Pioneer Middle School  
Sharon Cronk, Principal – Pioneer Elementary School  
Tenci Brown, Principal – Frontier Elementary School

Departamento de Educación de California • Abril de 2024

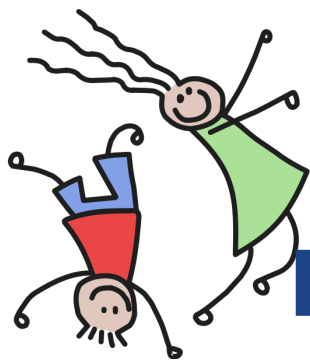
“A Learning Community Dedicated to Excellence”





Please share our information with Family and Friends. Currently, we have a few vacancies and it's never too early to get on the preschool waiting list!





# PASE



## Pioneer After School Enrichment

**What is PASE? PASE is a FREE after school program for *qualifying* families for students in grades TK-6.**

**How do I know if my child qualifies? Each year you must complete the online Interest Form *AND* the Free and Reduced Meal (FRM) Application which is part of the Annual Update in the Infinite Campus Parent Portal. If you qualify for FRM status, you qualify for PASE!**

**Frontier Elementary and  
Pioneer Middle**



**To start the process,  
please follow the QRC and  
complete the Interest Form  
that goes with your school.**



**Pioneer Elementary and  
Pioneer Middle**





# Panther Pride Qualifications



**3<sup>RD</sup>- 5<sup>TH</sup> GRADE STUDENTS**

## **PANTHER PRIDE CRITERIA (TRIMESTER GUIDELINES):**

- ❖ **NO DISCIPLINE REFERRALS DURING CURRENT TRIMESTER**
- ❖ **MUST HAVE ALL “CONSISTENTLY” MARKS AND/OR NO MORE THAN 2 “MOST OF THE TIME” ON THEIR WORK HABITS ON THE REPORT CARD FOR THE TRIMESTER IN THE FOLLOWING AREAS:**  
Accepts responsibility for own behavior, Follows Directions, Respects other's rights/feelings/ property, Uses time effectively, and Completes and returns homework.
- ❖ **NO MORE THAN 4 CLIP CHART POINTS (I.E. ENDING ON PINK OR PURPLE).**
- ❖ **ANY NEW STUDENT MUST HAVE BEEN ENROLLED BY THE BEGINNING DATE OF THE PROGRESS REPORTS.**
- ❖ **NO MORE THAN 2 COMBINED ATTENDANCE MARKS DURING THE CURRENT TRIMESTER IN THE FOLLOWING CATEGORIES (EXCUSED OR UNEXCUSED):**
  - ABSENCES
  - TARDIES
  - EARLY SIGN-OUTS

***Please Note:** Students on IEPs will be considered meeting the above criteria for Citizenship if they are making progress towards meeting their individual IEP goals.*

***Be Proud, Be Aware, Be Wise, Be Safe***

## Student Birthdays



In an effort to encourage our students to develop a healthy lifestyle and protect students with food allergies from accidental exposure, and the changes in the **federal nutritional requirements**, **we will not allow food treats (including candy and juice)** for birthday snacks. Parents are still encouraged to celebrate student birthdays by offering an alternative to food treats such as providing an item for all students in the class with pencils, erasers, crayons, etc. Another fun idea is to donate a hardback book to the library in honor of your student. Please contact your child's teacher or school office in advance with a description of the birthday goodies. Parents will need prior approval before sending items to school. ***If food treats are brought to school, they will be returned since they are not allowed at school. Balloons, flower deliveries, etc. are not permitted for students.*** They will be refused if brought on campus, as it is a distraction to the learning environment.



## Visiting Campus

FOR THE SAFETY OF ALL STUDENTS, all visitors must report to the office to **check in with their driver's license**, which is run through our security database RAPTOR. Parents are welcome to have lunch with their child/children in a designated location (**no fast food**) or volunteer in classrooms (if coordinated with the teacher). If you are flagged within RAPTOR, you will not be allowed to enter campus during the school day. However, you are allowed to pick up/drop off your child within the office or outside the gates. When you are ready to leave, you will return your pass to the office and sign out.

**We do ask that other arrangements are made for your younger children and that they do not accompany you during your time on campus.**



**Regulation 5132: Dress And Grooming**

**Status: ADOPTED**

**Original Adopted Date:** 08/07/2019 | **Last Revised Date:** 02/08/2023 | **Last Reviewed Date:** 02/08/2023

In cooperation with teachers, students and parents/guardians, the principal or designee shall establish school rules governing student dress and grooming which are consistent with law, Board of Trustees policy and administrative regulations. These school dress codes shall be regularly reviewed.

Each school shall allow students to wear sun-protective clothing, including but not limited to hats, for outdoor use during the school day. (Education Code 35183.5)

School officials may prohibit any apparel, accessory, hairstyle or cosmetic, etc., even if not specifically mentioned in this regulation, that:

1. Creates a safety concern
2. Draws undue attention to the wearer
3. Detracts from the learning process
4. Causes a disturbance
5. Is considered gang related

In addition, the following guidelines shall apply to all regular school activities:

1. Shoes must be worn at all times. Sandals must have heel straps. Thongs or backless shoes or sandals are not acceptable. Military style boots, steel toes, cleats, slippers, shoes with rollers, and high heels are prohibited.
2. Clothing, jewelry and personal items (backpacks, fanny packs, gym bags, water bottles etc.) shall be free of writing, pictures or any other insignia which are crude, vulgar, profane or sexually suggestive, which bear drug, alcohol or tobacco company advertising, promotions and likenesses, or which advocate racial, ethnic or religious prejudice.
3. Headwear other than hats, caps and visors will not be allowed at school. Hats, caps and visors must be removed in the classrooms, offices or other school facilities. Knit caps and the hood of a sweatshirt may be worn outdoors if the ambient temperature is sixty degrees or lower.
4. Clothes shall be sufficient to conceal undergarments at all times. See-through fabric, halter tops, off-the-shoulder, and spaghetti straps are prohibited. Shorts, shirts and dresses, can be no shorter than the level where the student's closed fist strikes the thigh when standing with arms straight down and at their side with shoulders relaxed. Holes in clothing may not be above this measurement. Clothing that becomes revealing to the midriff, pubic area, buttocks, or chest when standing, sitting, or moving is prohibited.
5. Physical education clothing may not be worn in classes other than physical education.
6. Earrings must be small and worn in ears. Body piercings are limited to studs.

No grade of a student participating in a physical education class shall be adversely affected if the student does not wear standardized physical education apparel because of circumstances beyond the student's control. (Education Code 49066)

---

# NEED HELP? CALL (559) 247-HELP

(559) 247-4357



## KINGS COUNTY BEHAVIORAL HEALTH CALL CENTER & MOBILE CRISIS RESPONSE

Trained operators are standing by to help if you are experiencing a psychiatric crisis, just need a listening ear, or want to access County mental health or substance use disorder services.

- ✓ Psychiatric Crisis
- ✓ Access Services
- ✓ Just to Talk
- ✓ 24 hours per day
- ✓ 7 days per week
- ✓ 365 days a year



**KINGS COUNTY  
BEHAVIORAL HEALTH**



**KINGS VIEW**